

WT50002CF

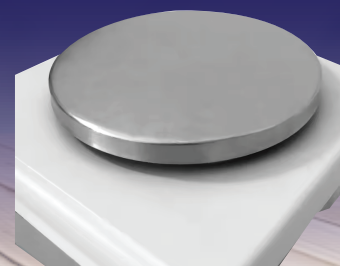
Want Electronic Balance



RS232 Interface



Stainless Steel Pan



Specifications

Brand Name	Want
Model	WT50002CF
Power Supply	AC/DC
Display Type	LCD
Accuracy	0.01g
Capacity	5000g
Pan size	160mm
Outline size	33*21*10cm
Material	Stainless steel pan-ABS body
Interface	RS232

Six Core Functions



Automatically Clear



Equipped with RS232 interface



Direct Reading of Density Weighing



Counting Function



Unit Conversion



Rechargeable

Aluminum Alloy Enlarged Base

Stable & Reliable

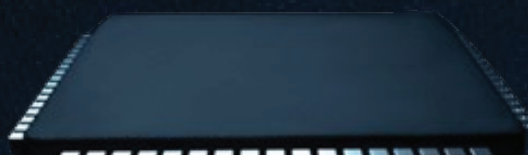
The sensor part is sealed and shielded separately & the Bottom thickness is upto 3.8mm



High Performance

ELECTROMAGNETIC INDUCTION SENSOR

Accurate to 0.001g



Quad-core Intelligent Central Processing Chip

IC Circute Intergrated CBC Chip Computing Technology

